

ROTSVAST

verhuur, verkoop & vastgoedbeheer



Scan the QR code and view
this object on rotsvast.nl

Machteld van Meterenlaan Delft

Features



109m²

€2.200 p.m.



Rotsvast Delft

T: +31152158010
E: delft@rotsvast.nl
www.rotsvast.nl

Features

Transfer

Price: €2.200 p.m.

Status: Verhuurd

Interior: Upholstered

Build

House type: Apartment, Flat, Apartment

District: Koningsveldbuurt

Surface areas and volumes

Living area: 109m²

Indeling

Number of living rooms: 3

Number of bedrooms: 2

Number of bathrooms: 1

Total of rooms: 3

Number of toilets: 1

Features

Pets: No

Other facilities: Elevator

Public transport: Yes

Description

Not available for students/group housing.

In the vicinity you will find in the downtown shopping center In de Veste or shopping center 'De Hoven Passage', cinema, theater and many restaurants and cafes. Apartment is within 5 minutes walk of TU Delft and the international school. Via Julianalaan or Rotterdamseweg the A13 and the provincial road (N470) to the (new) A4 is easily accessible.

Layout:

Ground floor: On the ground floor the entrance is situated with mailboxes, videophone, staircase and elevator to the upper floors and the basement / storage rooms.

1st floor: entrance hall with access to only 2 apartments. Entrance of the apartment with central hallway with access to all chambers.

On the front is a spacious bedroom (4.95 / 4:57 x 3.16), through a large sliding door is the adjacent loggia / conservatory (4.56 x 2.37) accessible. The conservatory has a large glass facade (double glazed) with sliding doors and with some adjustments you can create an extra room. In summer you can open the doors, and enjoy the evening sun.

The hall gives access to a storage closet, where the boiler and mechanical ventilation is installed. The toilet and the laundry room with room for a washer and dryer are accessible from the hall. The bathroom (2.98 x 2.04) is equipped with neutral black / white tiles and light wall tiles. The bathroom has a sink, 2nd toilet, separate shower with thermostatic and a bath with thermostatic.

The bright, large living room (4.93 x 7.33 / 6.21) has windows with low sills, giving you a great view to the Lausbergstraat and the Schie. The open L-shaped kitchen (2.43 x 3.20) with black granite top is equipped with a refrigerator, freezer, Bosch dishwasher, ceramic cooker, oven and recirculation mode. The living room adjoins also the large, almost square balcony (2.86 x 2:56) which faces south. A useable space to enjoy the view and see the passing boats on the Schie.

The closed car park, accessible by stairs and elevator, can be opened with a remote control. Here are the private parking and private storage (approximately 2.45 x 2.45). You can also use the communal bicycle storage.

Working tenants, minimum rental period is 1 year.

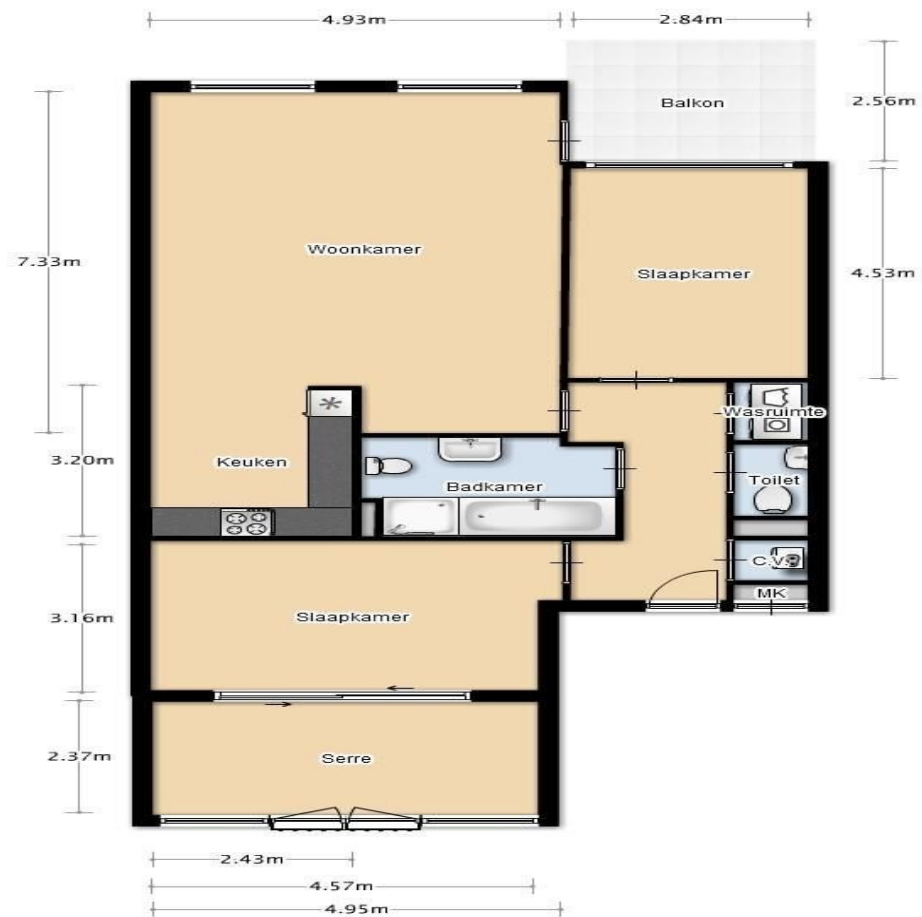
Media



Media



Media





Rotsvast Delft

T: +31152158010

E: delft@rotsvast.nl

www.rotsvast.nl

ROTSVAST

verhuur, verkoop & vastgoedbeheer